

  
**PROMINENCE**  
ESTATES



**RESIDENTIAL**  
PROPERTY EXPERTS

COVENTRY, WARWICKSHIRE  
& LEAMINGTON SPA

**HEVER HALL,**

CONISBROUGH KEEP, COVENTRY, CV1 5PB

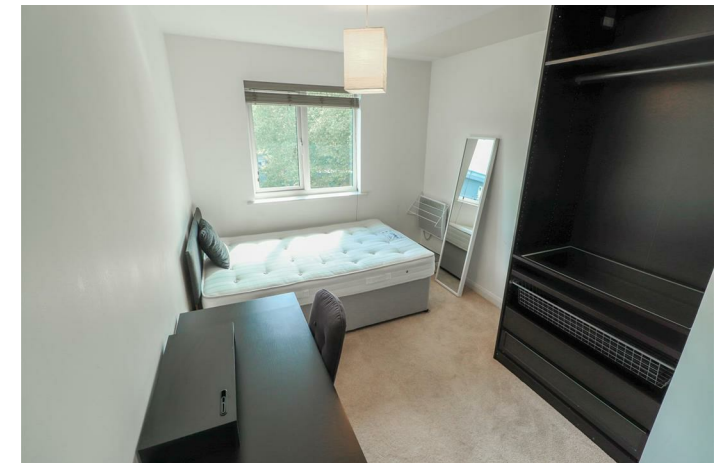
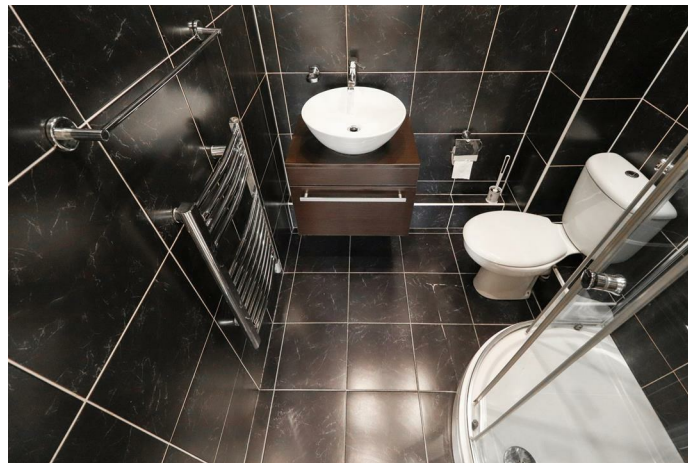
**£1,250 PCM**

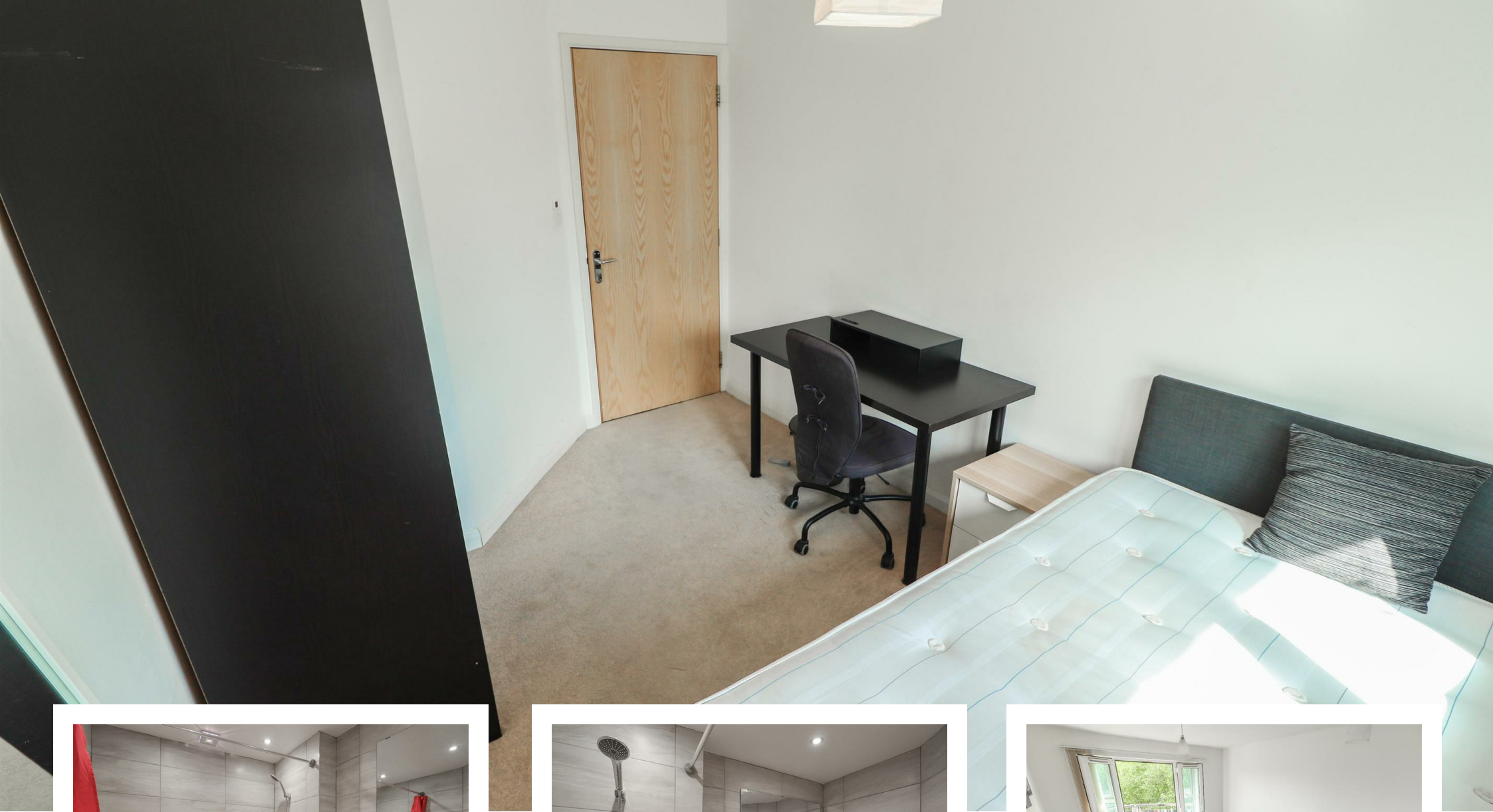
# HEVER HALL

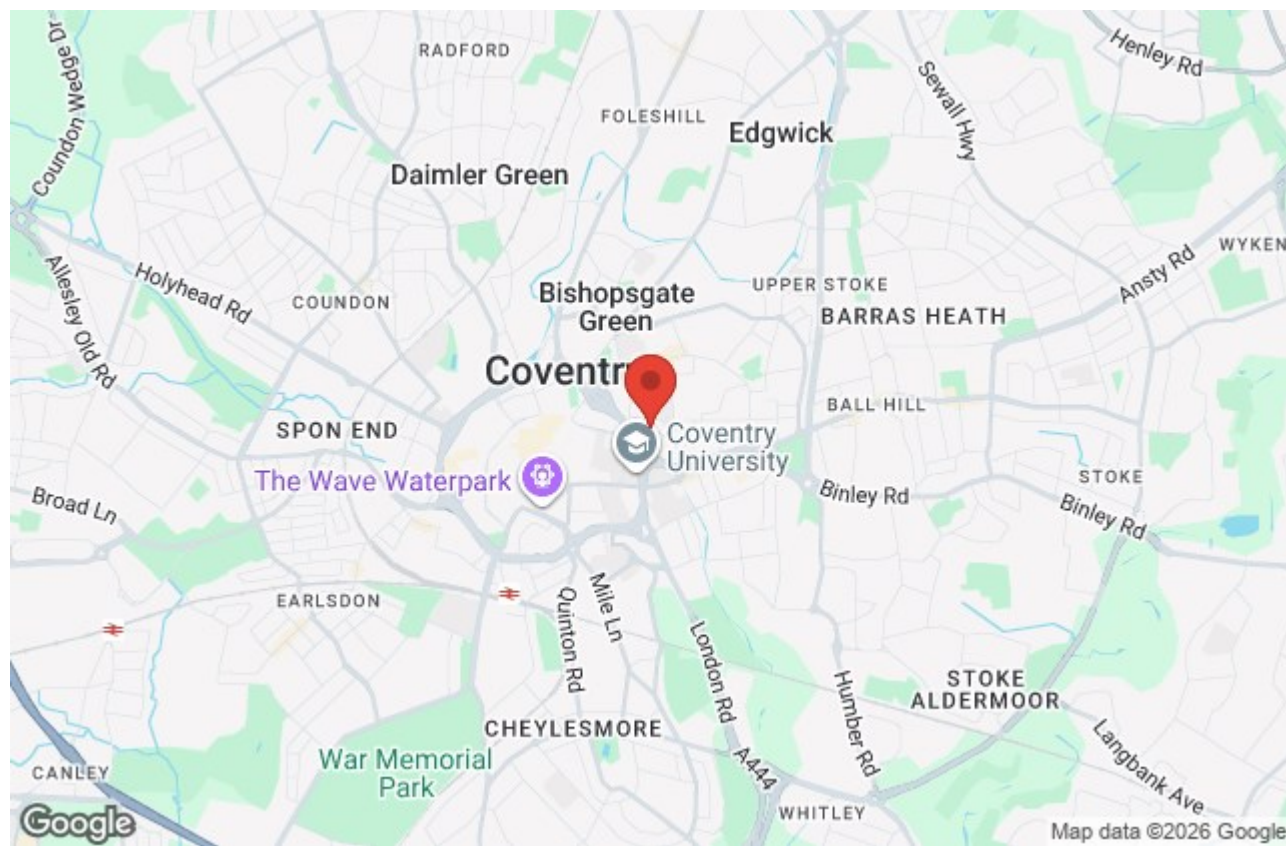


**PROMINENCE**  
ESTATES

Exclusive Luxury Apartment Available Now in Coventry City Centre - We have a range of modern apartments available within 5 minutes walking distance to Coventry University. In brief the apartment comprises of; large master bedroom with luxurious en-suite shower room, second double bedroom, newly refurbished modern bathroom and a spacious open plan living room and kitchen area. The apartment also benefits from having secure gated parking with allocated parking and comes fully furnished.







Prominence Estates  
5 Queen Isabels Avenue,  
Cheylesmore,  
Coventry,  
CV3 5GE

02476 309 826  
lettings@prominenceestates.com  
www.prominenceestates.com

  
**PROMINENCE**  
ESTATES